




---

---

---

---

---

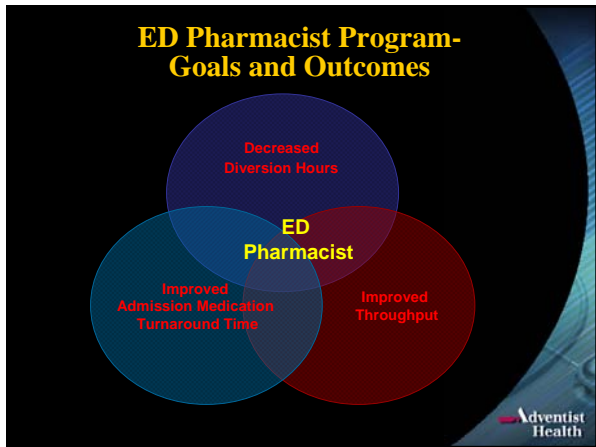
---

---

---

---

---




---

---

---

---

---

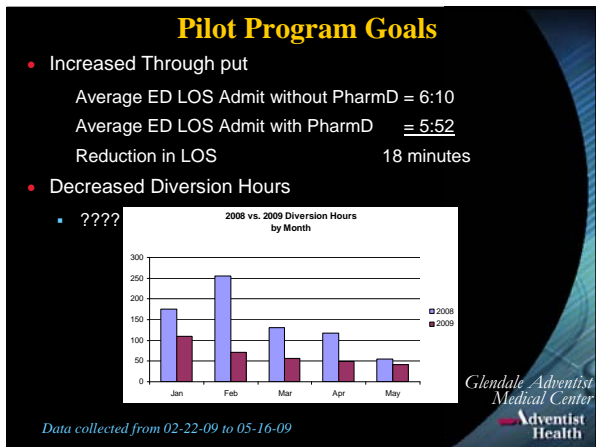
---

---

---

---

---




---

---

---

---

---

---

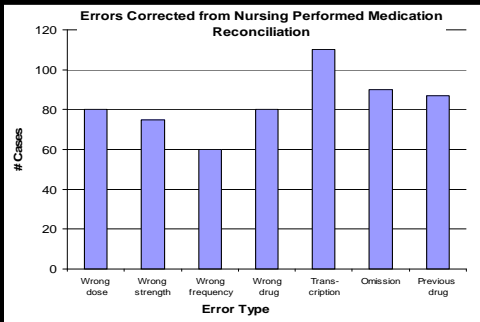
---

---

---

---

## ED Pharmacist Activities at a Glance



Data collected from 02-07-09 to 06-01-09




---

---

---

---

---

---

---

---

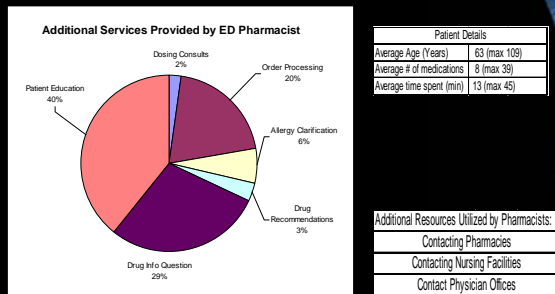
---

---

---

---

## ED Pharmacist Activities at a Glance (cont.)



Data collected from 02-07-09 to 06-01-09




---

---

---

---

---

---

---

---

---

---

---

---

## Clinically Advantageous

- Regulatory Standards
  - Title 22 Requirements
- Drug Information/Medical Education
  - Readily available resource
- Med Reconciliation
  - Complete, accurate, and timely completion of M1
  - Floor nurse call Physician for orders
- Standard of Care
  - Huntington Memorial
  - Cedars Sinai
  - Fountain Valley
  - Various Kaisers
  - Loma Linda University Medical Center
  - Various VA Facilities




---

---

---

---

---

---

---

---

---

---

---

---

## Satisfaction

- Patient Satisfaction



*Friendly, expert advise at time of greatest stress  
Improved ED experience  
1:1 medication advise to patient or family*

- Physician Satisfaction

- Professional bedside collaboration
- Timely response

*Glendale Adventist  
Medical Center*  
**Adventist  
Health**

---

---

---

---

---

---

---

---

## Efficiency/Effectiveness Equation

*Evidence-based medicine produces  
better outcomes at a reduced cost.*



**Adventist  
Health**

---

---

---

---

---

---

---

---