



Southern California Patient Safety Collaborative Progress Report

Quarter 1, 2007- Quarter 3, 2009

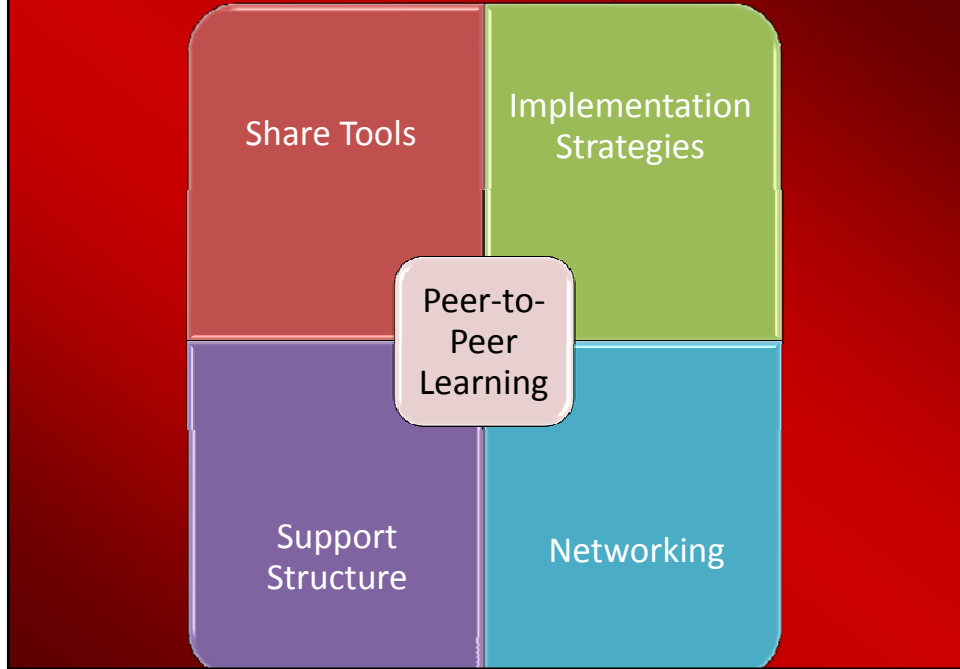
Track I Meeting 2010

February 23, 2010

SCPSC Track I Measures

- Adult ICU VAP rate per 1,000 ventilator days
- Adult ICU CL BSI rate per 1,000 central line days
- MRSA Laboratory-confirmed Bloodstream Infection rate per 1,000 patient days
- Hospital Acquired Pressure Ulcers (HAPU) Stage 2 or above from CalNoc quarterly prevalence study
- Mortality from severe sepsis/septic shock

The Collaborative Model of Improvement



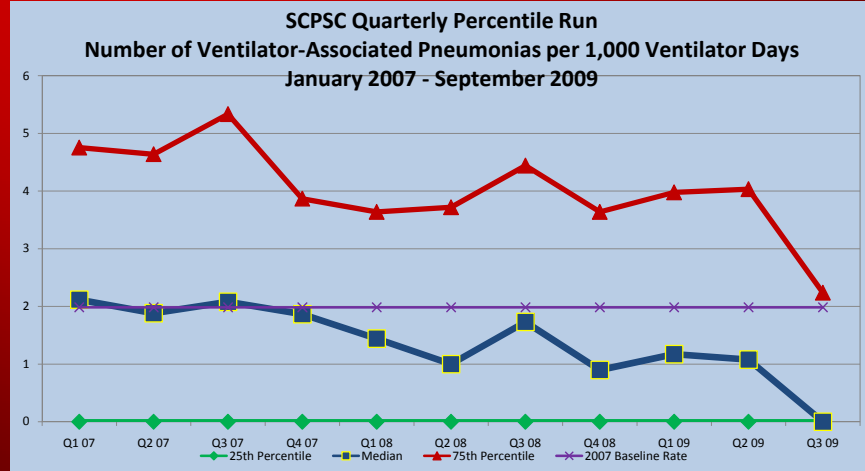
What is the "Zero Zone"?

At least 6 months of no infections

No more than 2 in the next 2 quarters



Ventilator Associated Pneumonia

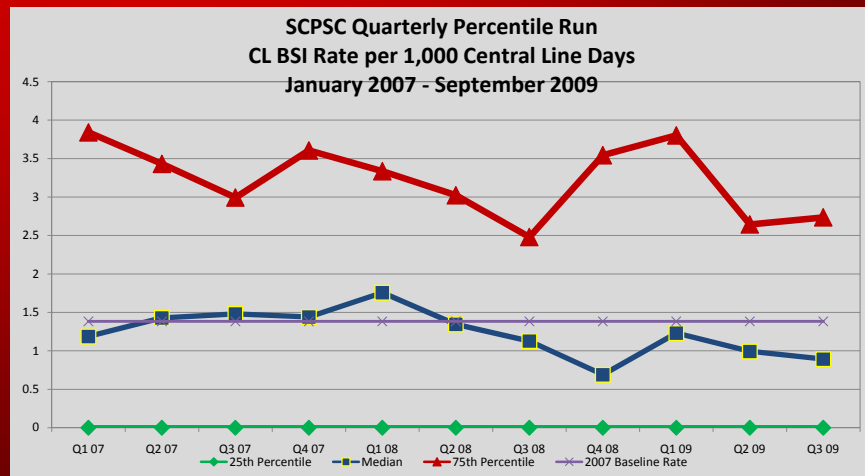


Mean = 2.10, Median = 0, N=26

VAP Zero Zone

- Barlow Respiratory Hospital
- Chino Valley Medical Center
- Community Hospital of Long Beach
- Community Memorial Hospital
- Corona Regional Medical Center
- Huntington Memorial Hospital
- La Palma Intercommunity Hospital
- Little Company of Mary – San Pedro
- Little Company of Mary - Torrance
- Providence Holy Cross
- Providence St. Joseph
- St. Vincent Medical Center
- Western Medical Center - Anaheim

Central Line BSI

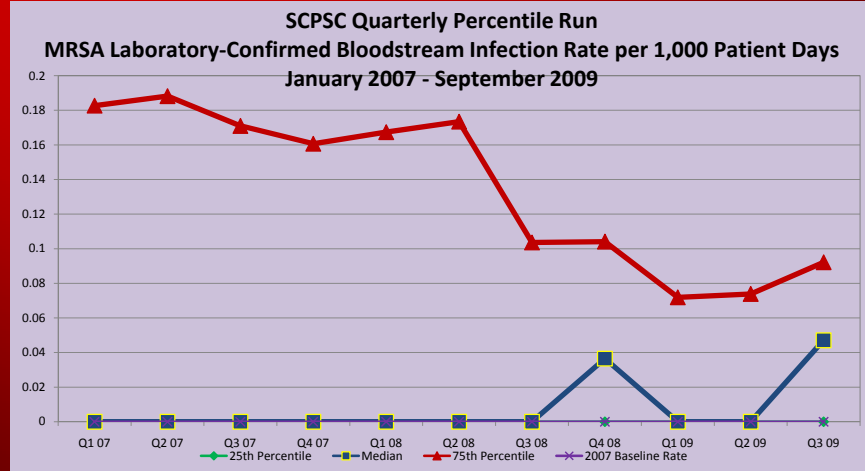


Mean = 1.65, Median = 0.8, N=57

CLBSI Zero Zone

- Chino Valley Medical Center
- Community Memorial Hospital
- Desert Valley Hospital
- Huntington Memorial Hospital
- La Palma Intercommunity Hospital
- Simi Valley Hospital
- Little Company of Mary - Torrance
- St. Vincent Medical Center
- Western Anaheim Medical Center

MRSA BSI

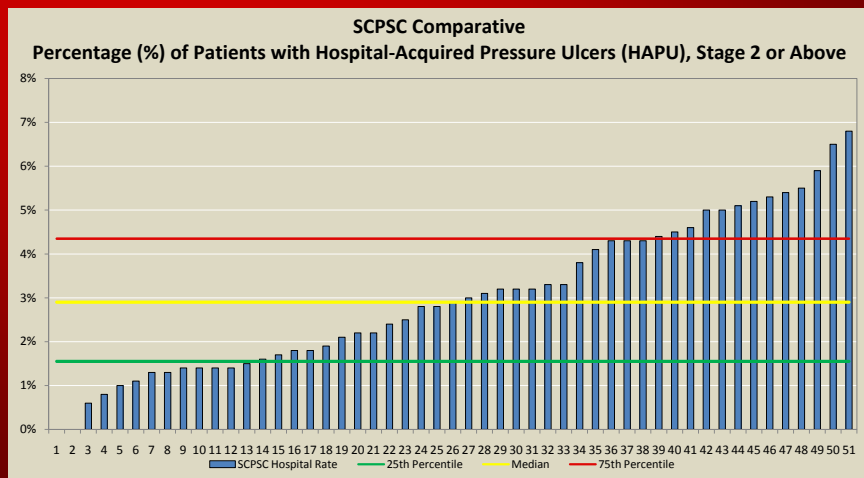


Mean = 0.18, Median = 0.05, N=26

MRSA Zero Zone

- Barlow Respiratory Hospital
- Community Hospital of Long Beach
- Glendale Adventist Medical Center
- Mountains Community Hospital
- Pacific Hospital of Long Beach
- Sherman Oaks Hospital

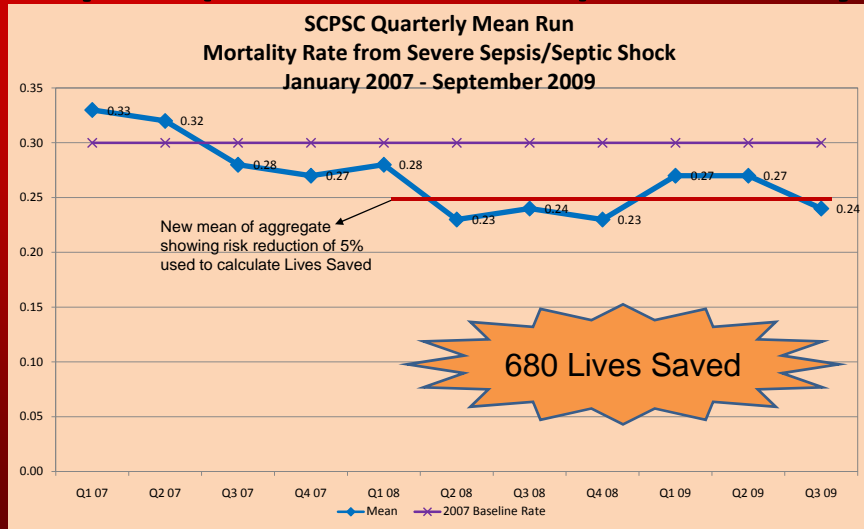
Pressure Ulcer Variation



Pressure Ulcer Honor Roll 25th percentile

- White Memorial Medical Center
- Pacific Hospital of Long Beach
- Hoag Memorial Hospital Presbyterian
- Monterey Park Hospital
- Good Samaritan Hospital - Los Angeles
- San Antonio Community Hospital
- Olympia Medical Center
- St. John's Pleasant Valley Hospital
- Mission Hospital
- Foothill Presbyterian Hospital
- St. Joseph Hospital - Orange
- Glendale Memorial Hospital and Health Center
- Los Alamitos Medical Center

Sepsis (Severe/Shock) Mortality



Mean = 27%, Median = 24%, N=19,

Actual Risk Reduction = 5%, Relative Risk Reduction = 17%